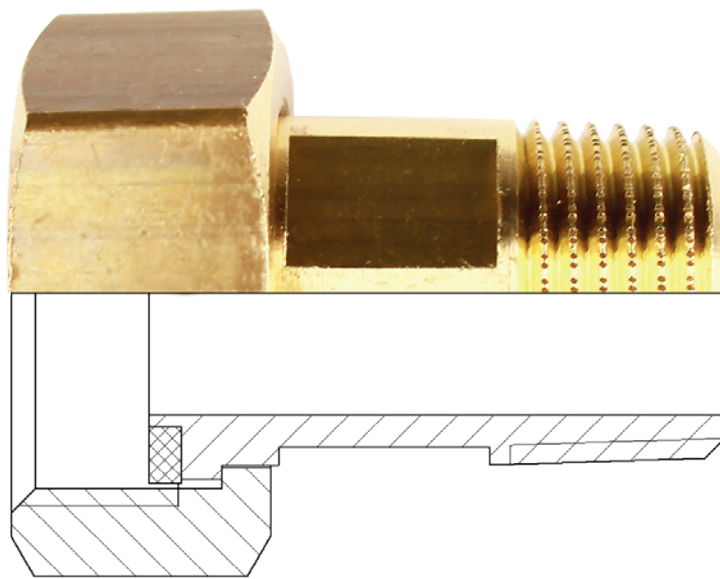


BEULCO®

WATER



2022  MADE IN GERMANY

Water Meter Fittings.

G

**STAY
CONNECTED.**

#DRINKINGWATERPASSION 

CONTENT

WATER METER FITTINGS - G

Overview product group G.....	06
Product range.....	08
Spare parts for water meter installation set	20

WATER METER FITTINGS





OVERVIEW

Water Meter Fittings

Application ● DW = Drinking Water
● W = Water


Image	Description	Page
	Water meter fitting Model 6801 ● ●	08
	Water meter fitting Model 6801V ● ●	08
	Water meter fitting chromed verchromt Model 6801V ● ●	09
	Water meter fitting reduced Model 6820 ● ●	09
	Water meter fitting with drain connection Model 6810 ● ●	09
	Water meter fitting with sealing surface and bore Model 68011 ● ●	10
	Water meter fitting reduziert reduced with bore Model 68201 ● ●	10
	Socket Model 166 ● ●	11

Image	Description	Page
	Socket Model 167 ● ●	11
	Extension fitting Model 6840 ● ●	12
	Extension piece Model 6842 ● ●	12
	Connector Model 6843 ● ●	13
	Connector Model 6844 ● ●	13
	Connector Model 6845 ● ●	13
	Water meter test adapter/ flushing adapter Model 60200 ● ●	14
	Bridging pipe Model 60050 ● ●	14









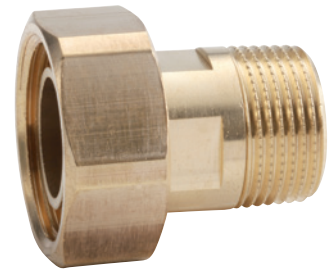
Image	Description	Page
	Bridging pipe Model 60171 ●●	15
	S-bend Model 6050 ●●	15
	Sliding sleeve with non-return valve Model 6094 ●●	15
	Blocking disc (brasse) Model 60200.1 ●●	16
	Blocking disc with bore Model 60202 ●●	16
	Seal (HDPE) Model 6843.1 ●●	16
	Seal (HDPE) Model 6092 ●●	17
	HW-seal Model 6093 ●●	17

Image	Description	Page
	Sealing device Model 6091	18
	Wrench set Model 6097	18
	Installation set for water meter installation set Model 6070E	18
	Noise isolating plugs Model 6071	19
	Spare parts for water meter installation sets (even for previous models) ●●	20-22

WATER METER FITTING

Model 6801

with sealing surface, without bore
incl. seal



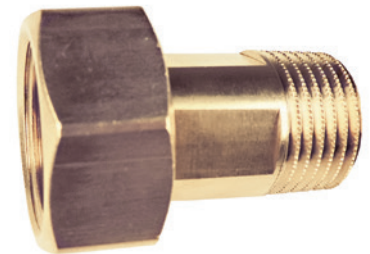
Item may differ from the illustration.

dimension female x male thread	DW	W	pkg. unit	EAN no. 4027848-
3/4" x 1/2"	●	⊙	25	143184
1" x 3/4"	●	⊙	25	143191
1" x 3/4" (leichtere Ausführung)	●	⊙	25	143696
1 1/4" x 1"	●	⊙	10	143207
1 1/2" x 1 1/4"	●	⊙	1	143214
2" x 1 1/2"	●	⊙	1	143221
2 1/2" x 2"	●	⊙	1	143238

WATER METER FITTING

Model 6801V

without sealing surface, without bore



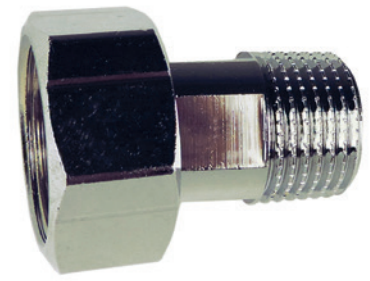
dimension female x male thread	DW	W	pkg. unit	EAN no. 4027848-
3/4" x 1/2"	●	⊙	25	177332
1" x 3/4"	●	⊙	25	177356
1 1/4" x 1"	●	⊙	10	177370
1 1/2" x 1 1/4"	●	⊙	1	177394

Application ● DW = Drinking Water
● W = Water

WATER METER FITTING

Model 6801V

chromed
with sealing surface, without bore
incl. seal



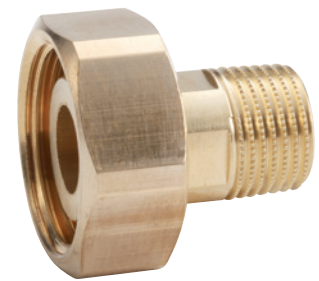
Item may differ from the illustration.

dimension female x male thread	DW	W	pkg. unit	EAN no. 4027848-
3/4" x 1/2"	●	●	25	185351

WATER METER FITTING

Model 6820

reduced, with sealing surface, without bore
incl. seal

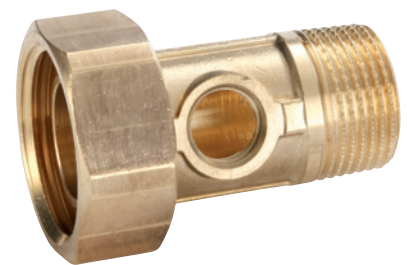


dimension female x male thread	DW	W	pkg. unit	EAN no. 4027848-
1" x 1/2"	●	●	5	143245

WATER METER FITTING

Model 6810

with drain connection 1/4", with sealing surface, without bore
incl. seal

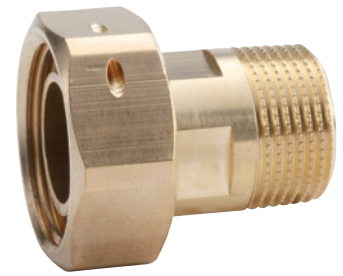


dimension female x male thread	DW	W	pkg. unit	EAN no. 4027848-
3/4" x 1/2"	●	●	5	143368
1" x 3/4"	●	●	5	143375
1 1/4" x 1"	●	●	5	143382
1 1/2" x 1 1/4"	●	●	5	143399
2" x 1 1/2"	●	●	1	343058

WATER METER FITTING

Model 68011

with sealing surface and bore
incl. seal



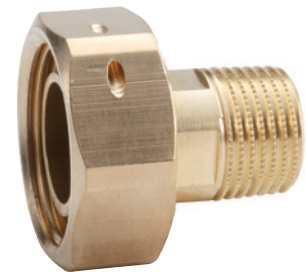
Item may differ from the illustration.

dimension female x male thread	DW	W	pkg. unit	EAN no. 4027848-
3/4" x 1/2"	●	●	25	143276
1" x 3/4"	●	●	10	143283
1" x 3/4" (leichtere Ausführung)	●	●	25	143702
1 1/4" x 1"	●	●	10	143290
1 1/2" x 1 1/4"	●	●	5	143306
2" x 1 1/2"	●	●	1	143313
2 1/2" x 2"	●	●	1	143320

WATER METER FITTING

Model 68201

reduced, with sealing surface and bore
incl. seal



dimension female x male thread	DW	W	pkg. unit	EAN no. 4027848-
1" x 1/2"	●	●	5	143337
1 1/4" x 3/4"	●	●	5	143344

Application ● DW = Drinking Water
● W = Water

SOCKET

Model 166

with copper female soldering end, without sealing surface, flat sealing



Item may differ from the illustration.

dimension female x male thread	dimension copper pipe Ø	NV	DW	W	pkg. unit	EAN no. 4027848-
3/4"	15	1/2"	●	⦿	20	201099
3/4"	18	1/2"	●	⦿	20	197941
1"	22	3/4"	●	⦿	20	195251
1 1/4"	28	1"	●	⦿	10	191390
1 1/2"	35	1 1/4"	●	⦿	5	193660
2"	42	1 1/2"	●	⦿	1	192243
2 1/2"	54	2"	●	⦿	1	192250

SOCKET

Model 167

with copper female soldering end, without sealing surface and bore incl. seal

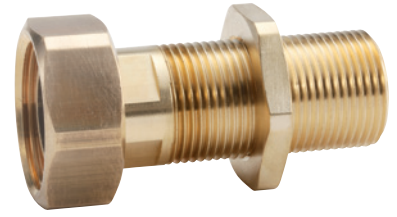


dimension female x male thread	dimension copper pipe Ø	NV	DW	W	pkg. unit	EAN no. 4027848-
3/4"	15	1/2"	●	⦿	10	143566
3/4"	18	1/2"	●	⦿	10	143573
1"	22	3/4"	●	⦿	10	143580
1 1/4"	28	1"	●	⦿	10	143597
1 1/2"	35	1 1/4"	●	⦿	5	143603
2"	42	1 1/2"	●	⦿	2	143610
2 1/2"	54	2"	●	⦿	1	143627

SOCKET

Model 6840

with Cu internal soldering end, without sealing surface and bore
incl. seal



Item may differ from the illustration.

dimension female x male thread	DW	W	pkg. unit	EAN no. 4027848-
3/4" x 1/2"	●	●	10	143634
1" x 3/4"	●	●	10	143641
1 1/4" x 1"	●	●	5	143658
2" x 1 1/2"	●	●	1	143672

EXTENSION PIECE

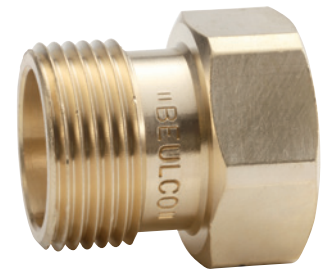
Model 6842

without seal

suitable seals:

for version 1": Ø 30 x Ø 23 x 2 mm - Model 6092 and 6093 (see page 17)

for version 1 1/4": Ø 38 x Ø 29 x 2 mm - Model 6092 and 6093 (see page 17)



thread	length compensation	DW	W	pkg. unit	EAN no. 4027848-
1" x 1"	28 mm	●	●	25	143146
1 1/4" x 1 1/4"	30 mm	●	●	5	143153

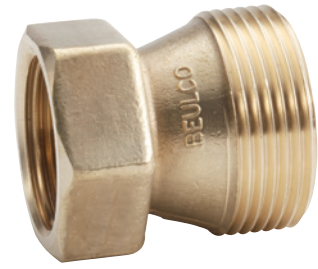
Application ● DW = Drinking Water
● W = Water

CONNECTOR

Model 6843

35 mm length compensation from 260 mm up to 190 mm
for reduction from $Q_3 = 10$ (before Qn 6) to $Q_3 = 4$ (before Qn 2,5)
without seal

suitable seal: $\varnothing 30 \times \varnothing 21 \times 2$ mm - Model 6843.1 (see page 16)



thread female x male	length compensation	reduction	DW	W	pkg. unit	EAN no. 4027848-
1" x 1 1/4"	28 mm	$Q_3 = 10$ auf $Q_3 = 4$	●	●	10	143160

CONNECTOR

Model 6844

20 mm length compensation from 300 mm up to 260 mm
for reduction from $Q_3 = 16$ (before Qn 10) to $Q_3 = 10$ (before Qn 6)
without seal

suitable seal: $\varnothing 38 \times \varnothing 29 \times 2$ mm - Model 6092 or 6093 (see page 17)



thread female x male	length compensation	reduction	DW	W	pkg. unit	EAN no. 4027848-
1 1/4" x 2"	20 mm	$Q_3 = 16$ auf $Q_3 = 10$	●	●	5	143177

REDUCTION CONNECTOR

Model 6845

incl. flexible union nut and sea

for reduction from $Q_n = 10$ (before Qn 6) to $Q_3 = 4$ (before Qn 2,5) or for
reduction from $Q_n = 16$ (before Qn 10) to $Q_3 = 4$ (before Qn 2,5)



thread female x male	length compensation	reduction	DW	W	pkg. unit	EAN no. 4027848-
1" x 1 1/4"	35 mm	$Q_3 = 10$ auf $Q_3 = 4$	●	●	10	352180
1" x 2"	55 mm	$Q_3 = 16$ auf $Q_3 = 4$	●	●	10	352326

WATER METER TEST ADAPTER/ FLUSHING ADAPTER

Model 60200

made of brass for horizontal water meter installation sets and house connection conduits, applicable for e.g. site water extraction or the connection of a test pump, middle outlet with female or male thread, optional: one side without passage



suitable for NV	passage	length (mm)	middle outlet	DW	W	pkg. unit	EAN no. 4027848-
3/4"	1" MT	190	3/4" FT	●	●	1	231447
3/4"	1" MT	190	1" FT	●	●	1	237302
3/4"	1" MT	190	1" MT	●	●	1	236633

BRIDGING PIPE

Model 60050

made of brass



suitable for NV	suitable for	length (mm)	MT	DW	W	pkg. unit	EAN no. 4027848-
1/2"	Steigrohr	105	3/4"	●	●	10	153565
1/2"	waagrecht	165	3/4"	●	●	10	153558
3/4"	Steigrohr	105	1"	●	●	10	153589
3/4"	waagrecht	190	1"	●	●	5	153572
1"	waagrecht	260	1 1/4"	●	●	2	153596

Application ● DW = Drinking Water
● W = Water

BRIDGING PIPE

Model 60171

made of plastic
(only for temporary installation)



Item may differ from the illustration.

suitable for NV	suitable for	length (mm)	MT	DW	W	pkg. unit	EAN no. 4027848-
3/4"	waagerecht	190	1"		●	10	153718

S-BEND

Model 6050

with cylindrical female thread and conical male thread



Thread	offset (mm)	DW	W	pkg. unit	EAN no. 4027848-
1"	45	●	●	5	142699
1 1/4"	50	●	●	5	142705

SLIDING SLEEVE

Model 6094

with non-return valve



for water meter NV	DW	W	pkg. unit	EAN no. 4027848-
3/4"	●	●	5	153879

BLOCKING DISC

Model 60200.1

closed, without bore among others applicable for water meter test adapter/ flushing adapter model 60200 and also for water meter installation sets Q₃ = 4 (before Qn 2,5)



dimension (mm)	DW	W	pkg. unit	EAN no. 4027848-
30 x 2	●	●	1	233700

BLOCKING DISC

Model 60202

with center bore (0,6 mm) for water meter installation sets Q₃ = 4 (before Qn 2,5)



dimension (mm)	DW	W	pkg. unit	EAN no. 4027848-
30 x 3	●	●	1	273911

SEAL (HDPE)

Model 6843.1

resistant up to max. 40 °C (not for gas),
for connector item no. 143160 - Modell 6843



dimension (mm)	DW	W	pkg. unit	EAN no. 4027848-
30 x 21 x 2	●	●	50	242009

Application ● DW = Drinking Water
● W = Water

SEAL (HDPE)

Model 6092

resistant up to max. 40 °C (not for gas)



Item may differ from the illustration.

for NV	dimension (mm)	DW	W	pkg. unit	EAN no. 4027848-
1/2"	23,5 x 16,5 x 2	●	⦿	25	183685
3/4"	30 x 23 x 2	●	⦿	25	183692
1"	38 x 29 x 2	●	⦿	25	325221
1 1/4"	44 x 35 x 2	●	⦿	50	183715
1 1/2"	55 x 43 x 2	●	⦿	50	183739
2"	72 x 60 x 2	●	⦿	50	183746

HW SEAL

Model 6093

made of vulcanized fiber, resistant up to max. 90 °C (not for gas)



for NV	dimension (mm)	DW	W	pkg. unit	EAN no. 4027848-
1/2"	23,5 x 16,5 x 2	●	⦿	50	183555
3/4"	30 x 23 x 2	●	⦿	50	183579
1"	38 x 29 x 2	●	⦿	50	183593
1 1/4"	44 x 35 x 2	●	⦿	20	183616
1 1/2"	55 x 43 x 2	●	⦿	10	183647

SEALING DEVICE

Model 6091

white, adjustable



Item may differ from the illustration.

for union nut	pkg. unit	EAN no. 4027848-
1" - 2 1/4"	200	183265

WRENCH SETT

Model 6097

consisting of:
double open-end wrench (opening 24/38) hardened and burnished (extremely flat) for water meter installation set and socket wrench (hexagon) (opening 38) for counter nut



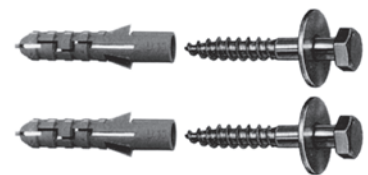
	pkg. unit	EAN no. 4027848-
for water meter installation sets Q3 = 4 (before Qn 2,5)	1	322534

MOUNTING SET

Model 6070E

for water meter installation sets, for cold water up to max 40 °C (not for gas)

consisting of: 2 screws made of stainless steel, 2 washers made of stainless steel, 2 plugs made of plastic, 2 HDPE seals



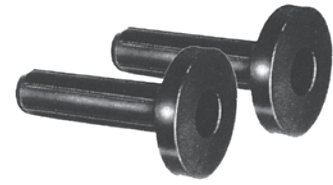
for water meters	pkg. unit	EAN no. 4027848-
Q ₃ = 2,5 (before Qn 1,5)	1	266036
Q ₃ = 4 (before Qn 2,5)	1	266043
Q ₃ = 10 (before Qn 6)	1	266050
Q ₃ = 16 (before Qn 10)	1	266067

Application ● DW = Drinking Water
● W = Water

NOISE ISOLATING PLUGS

Model 6071

noise isolating (for the acoustic decoupling of water meter installation sets)
packed in pairs



Item may differ from the illustration.

for mounting set model 6070E	pkg. unit	EAN no. 4027848-
Q ₃ = 10 (vorher Qn 6)	1	153763



„BEULCO in three words?

Family-oriented, innovative and customer-focused“.

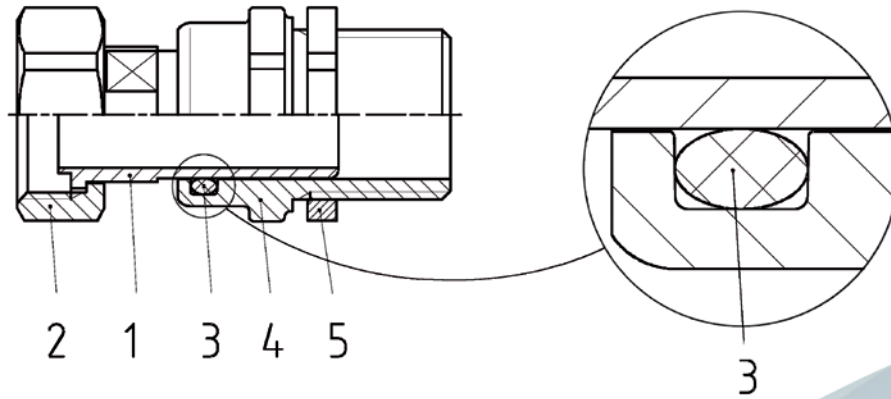
Bernd Meyer

Field service
with BEULCO for 12 years

SPARE PARTS

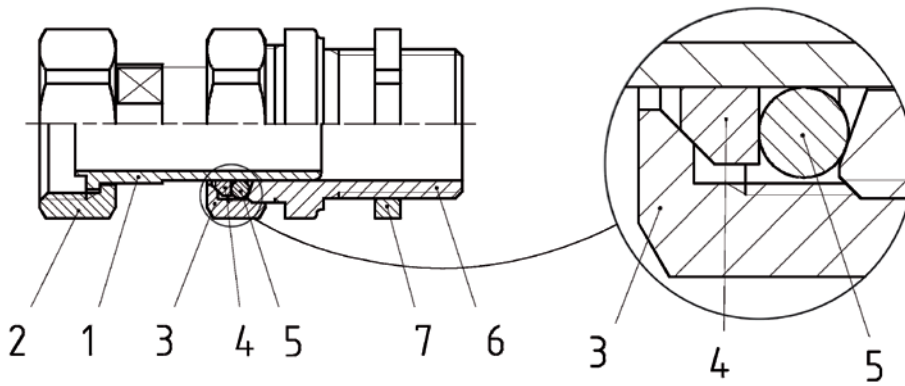
For length compensation fittings

LCF B 61



- 1 Sliding sleeve
- 2 Union nut
- 3 O-ring chambered
- 4 Case
- 5 Counter nut

LCF B 60



- 1 Sliding sleeve
- 2 Union nut
- 3 Pressure nut
- 4 thrust ring
- 5 O-ring
- 6 Case
- 7 Counter nut

SPARE PARTS

For length compensation fittings

The most frequently needed spare parts are listed below. More on request.

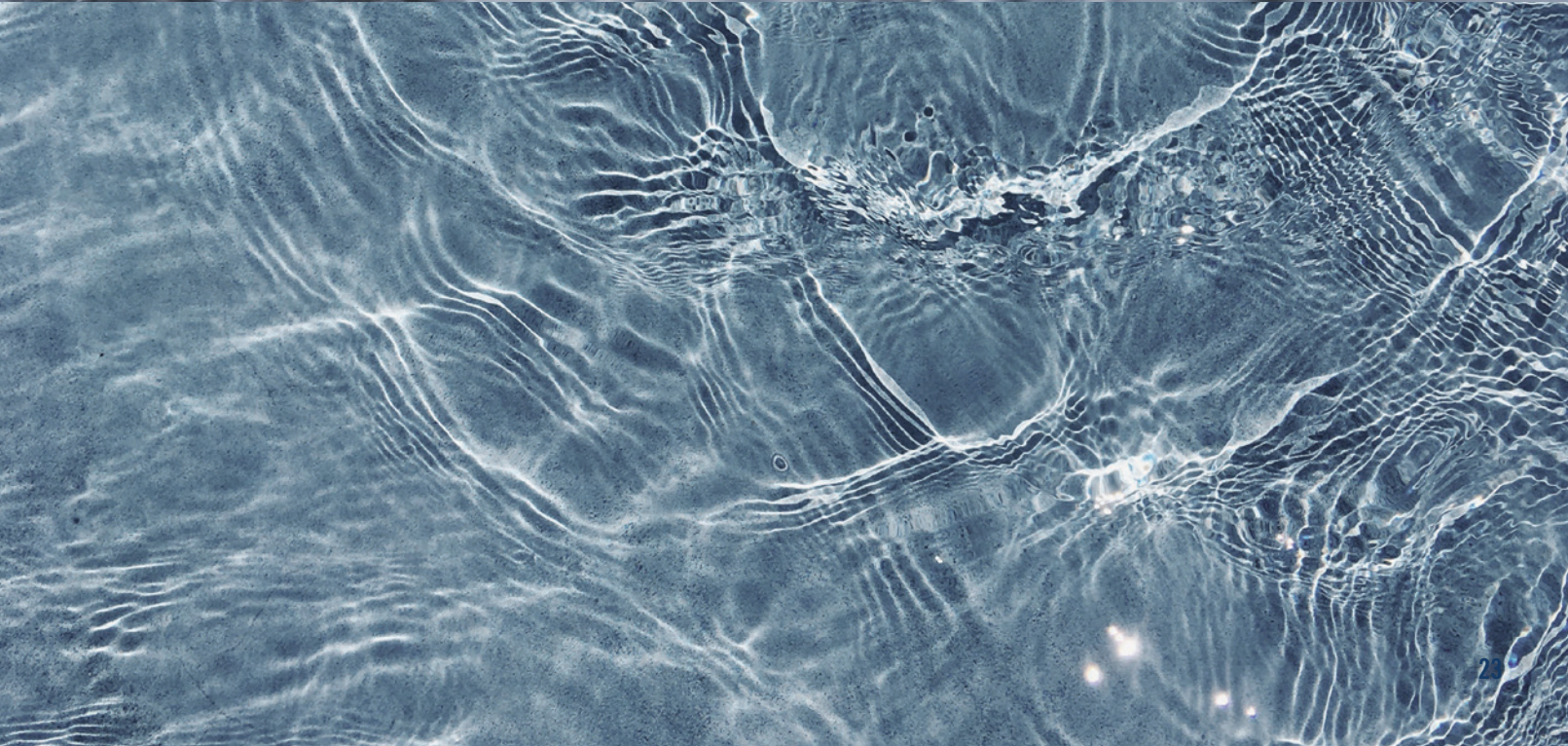
for water meter installation sets	description	dimension	DW	W	pkg. unit	EAN no. 4027848-
Q ₃ = 2,5 (before Qn 1,5) with LAV B 61	sliding sleeve with sealing surface	1/2" x 47	●	⦿	1	374168
	o-ring (EPDM for hot water up to 130°C)	20 x 4	●	⦿	1	210213
Q ₃ = 4 (before Qn 2,5) with LAV B 61	sliding sleeve with sealing surface	3/4" x 54	●	⦿	1	341047
	o-ring (EPDM for hot water up to 130°C)	25 x 4	●	⦿	1	338672
Q ₃ = 4 (before Qn 2,5) with LAV B 60	sliding sleeve with sealing surface	3/4" x 54,5	●	⦿	1	341047
	forcing nut	M 35 x 1,5	●	⦿	1	180349
	Druckring	32 x 25 x 3	●	⦿	1	180356
	o-ring (EPDM for hot water up to 130°C)	25 x 4	●	⦿	1	338672
Q ₃ = 10 (before Qn 6) with LAV B 60	forcing nut	M 42 x 1,5	●	⦿	1	180509
	forcing ring	38,9 x 32 x 3	●	⦿	1	180493
	o-ring (EPDM for hot water up to 130°C)	32 x 4	●	⦿	1	338634
Q ₃ = 16 (before Qn 10) with LAV B 60	sliding sleeve with sealing surface	1 1/2" x 76	●	⦿	1	379743
	forcing nut	M 60 x 1,5	●	⦿	1	180622
	forcing ring	55,5 x 47,6 x 3	●	⦿	1	180639
	seal	49 x 40 x 8	●	⦿	1	192410

SPARE PARTS

For length compensation fittings

To ensure your continued use of earlier water meter connection sets, we also stock the following spare parts for the B60 NV 1 1/2" and Lugli KIII models:

for LAF	description	dimension	DW	W	pkg. unit	EAN no. 4027848-
Q ₃ = 2,5 (before Qn 1,5)	counter nut	3/4"	●	⦿	1	209774
	forcing nut	3/4"	●	⦿	1	209781
	seal	24 x 18 x 5	●	⦿	1	209873
	forcing ring		●	⦿	1	209798
Q ₃ = 4 (before Qn 2,5)	counter nut	1"	●	⦿	1	142385
	counter nut	1 1/4"	●	⦿	1	153008
	forcing nut	1"	●	⦿	1	152537
	sliding sleeve	3/4" - 71,5	●	⦿	1	152544
	union nut	1"	●	⦿	1	177349
	seal	30 x 24 x 5	●	⦿	1	152568
	forcing ring (plastic)	30 x 24,7 x 4	●	⦿	1	152575
Q ₃ = 10 (before Qn 6)	counter nut	1 1/4"	●	⦿	1	153008
	counter nut	1 1/2"	●	⦿	1	153015
	sliding sleeve	1" - 66	●	⦿	1	153183
	forcing nut	1 1/4"	●	⦿	1	178001
	seal	37 x 28,5 x 5	●	⦿	1	153220
		forcing ring (plastic)	38 x 31 x 4	●	⦿	1
Q ₃ = 16 (before Qn 10)	counter nut	2"	●	⦿	1	142415
	forcing nut	M 60 x 1,5	●	⦿	1	180622
	sliding sleeve	1 1/2" - 76	●	⦿	1	379743
	forcing nut	2"	●	⦿	1	177400
	seal	49 x 42 x 8	●	⦿	1	195114
		forcing ring	55,5 x 47,6 x 3	●	⦿	1



BEULCO® GmbH & Co. KG

Kölner Straße 92
D-57439 Attendorn

Postfach 1 20
D-57425 Attendorn

Tel. +49 2722 695-0

info@beulco.de
www.beulco.de