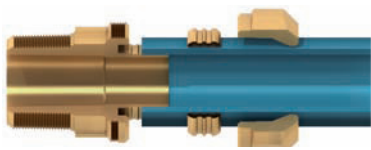


Characteristics

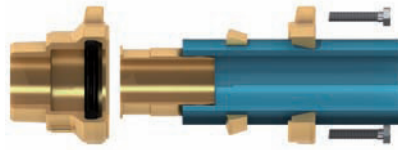
universally applicable
 only three components
 impermeable without additional seal
 tightly pressed insert pipe
 roughened male thread
 independent from structure of pipe surface

- > flexible by means of only one system
- > safe and simple mounting
- > no long-term damages
- > no deformation of the pipe
- > time-saving sealing
- > pipe grooves can be sealed without problems

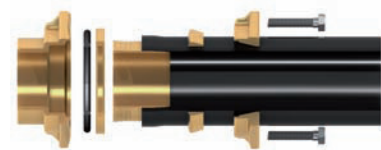
Your advantages



screwed connector series 66
up to outer diameter 75 mm



screwed connector series 66
outer diameter 63 and 75 mm



screwed connector series 66
outer diameter 90 and 110 mm

Installation instruction

for screw fittings of series 66 up to outer diameter 75 mm

1. Cut the plastic pipe at a right angle.
2. Push forcing nut and clamping ring onto the pipe.
3. Push the plastic pipe onto the cylindrical socket to the bottom of the bore.
4. Tighten forcing nut sufficiently.

Note: Preheated pipes can be installed easierly. For a safe connection in application of hot water please warm up the connection up to 60°-80° C after the installation and re-tighten the forcing nut.

for flange fittings of series 66 outer diameter 63 mm and 75 mm

1. Cut the plastic pipe at a right angle and chamfer it (the outer pipe surface has to be clean and free of marks).
2. Put flange and clamping ring onto the pipe and push in the insert pipe completely.
3. Push the plastic pipe with insert pipe into the fitting body to the bottom of the bore.
4. Take clamping ring and flange to the base body.
5. Connect flange and base body positively while tightening the screws equally so that tilting will be avoided.

for flange fittings of series 66 outer diameter 90 and 110 mm

1. Cut the plastic pipe at a right angle and chamfer it (the outer pipe surface has to be clean and free of marks).
2. Push the parts onto the pipe in the same sequences as shown in the depiction.
3. Knock in the insert completely.
4. Push in the plastic pipe into the base body to the bottom of the bore.
5. Take the parts to the base body.
6. Mount the flange firmly while tightening the screws so that tilting will be avoided.

Notes:

Preheated pipes can be installed easierly.

For thread connections to metal parts the permitted operation pressure is 4 bar in principle.

Corrosion protection acc. to DIN EN 12502-2 is necessary on site in the field of buried pipe constructions.