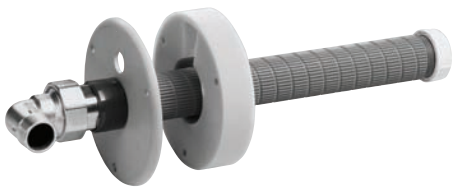


## Your advantages

- dimensionally stable material of the protecting pipe with a groove profile that cannot tear out
- free choice of length
- safe protection for the medium pipe
- impermeable against pressing water and stray gas
- practice oriented connections and different options of combinations



Wall duct with flange for a later installation

## Installation instruction

**When retrofitting our wall ducts, please observe the following outer diameters of the protecting pipes:**

Protecting pipe made of plastic	
Outer Ø of pipe or cable to be led through (mm)	Outer Ø wall duct (mm)
up to 26,9	40
up to 33,7	47
up to 43,0	57
up to 52,9	69
up to 64,5	83
up to 76,1	96

**Note:** The sealing between protecting pipe and brickwork should be made by suitable plastic material.