


BEULCO®

Product group I




LASTS

Manifold model 26080	Size	Pkg. unit	EAN-No. 4027848-	
	2-fold	1		145522
	3-fold	1		145539
	4-fold	1		145546
	5-fold	1		145553
	6-fold	1		145560
	7-fold	1		145577
	8-fold	1		145584
	9-fold	1		145591
	10-fold	1		145607
	11-fold	1		145614
	12-fold	1		145621

Manifold made of brass
ready for connection and pressure proofed

1" profile pipe, flows 3/4" Euro cone, valve distance 50 mm, with end plug, ventilation valve, **3/8" plug** as well as soundproofed mounting elements and stickers for marking the heating circuits.

Equipment **flow**: Flowmeters 0,5 - 2,5 l/min for adjusting of the installation
Equipment **return**: Thermostatic valves for manual regulating (retrofittable for electrical actuators)

Manifold model 26040	Size	Pkg. unit	EAN-No. 4027848-	
	2-fold	1		145195
	3-fold	1		145201
	4-fold	1		145218
	5-fold	1		145225
	6-fold	1		145232
	7-fold	1		145249
	8-fold	1		145256
	9-fold	1		145263
	10-fold	1		145270
	11-fold	1		145287
	12-fold	1		145294

Manifold made of brass
ready for connection and pressure proofed

1" profile pipe, flows 3/4" Euro cone, valve distance 50 mm, with end plug, ventilation valve, **3/8" plug** as well as soundproofed mounting elements and stickers for marking the heating circuits.

Equipment **flow**: Integrated fine regulating valve for manual presetting
Equipment **return**: Thermostatic valves for manual regulating (retrofittable for electrical actuators)

On request our manifolds are also available in stainless steel when project-specific. Please contact us.

Size	Pkg. unit	EAN-No. 4027848-
2-fold	1	145300
3-fold	1	145317
4-fold	1	145324
5-fold	1	145331
6-fold	1	145348
7-fold	1	145355
8-fold	1	145362
9-fold	1	145379
10-fold	1	145386
11-fold	1	145393
12-fold	1	145409

Manifold model 26070



Manifold made of brass

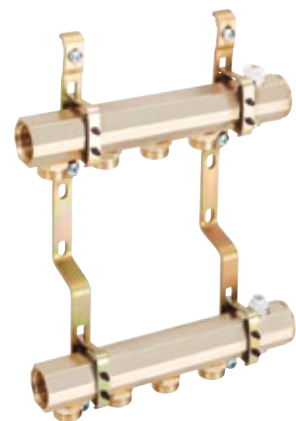
ready for connection and pressure proofed

1" profile pipe, flows 3/4" Euro cone, valve distance 50 mm, with end plug, ventilation valve, 3/8" plug as well as soundproofed mounting elements and stickers for marking the heating circuits.

Equipment **flow**: Integrated fine regulating valves for manual presetting
 Equipment **return**: electrical actuators 230 V

Size	Pkg. unit	EAN-No. 4027848-
2-fold	1	145638
3-fold	1	145645
4-fold	1	145652
5-fold	1	145669
6-fold	1	145676
7-fold	1	145683
8-fold	1	145690
9-fold	1	145706
10-fold	1	145713
11-fold	1	145720
12-fold	1	145737

Manifold model 28020




Manifold made of brass for heating connection

ready for connection and pressure proofed

1" profile pipe, flows 3/4" Euro cone, valve distance 50 mm, with end plug, ventilation valve, 3/8"-plug as well as soundproofed mounting elements and sticker for marking the heating circuits.


Equipment **flow and return**: one-side bores

Manifold model 23080	Size	Pkg. unit	EAN-No. 4027848-	
	2-fold	1		228614
	3-fold	1		228621
	4-fold	1		228638
	5-fold	1		228645
	6-fold	1		228652
	7-fold	1		228669
	8-fold	1		228676
	9-fold	1		228683
	10-fold	1		228690
	11-fold	1		228706
	12-fold	1		228713

Manifold made of brass
ready for connection and pressure proofed

1 1/4" profile pipe, flows 3/4" Euro cone, valve distance 50 mm, with end plug, ventilation valve, **1/2" plug** as well as soundproofed mounting elements and sticker for marking the heating circuits.

Equipment **flow**: Flowmeter 1 - 4 l/min to adjust the installation
Equipment **return**: Thermostatic valves for presetting by hand valve cap (retrofitable for electrical actuators)

Manifold model 23040	Size	Pkg. unit	EAN-No. 4027848-	
	2-fold	1		228362
	3-fold	1		228379
	4-fold	1		228386
	5-fold	1		228393
	6-fold	1		228409
	7-fold	1		228416
	8-fold	1		228423
	9-fold	1		228430
	10-fold	1		228447
	11-fold	1		228454
	12-fold	1		228461

Manifold made of brass
ready for connection and pressure proofed

1 1/4" profile pipe, flows 3/4" Euro cone, valve distance 50 mm, with end plug, ventilation valve, **1/2" plug** as well as soundproofed mounting elements and stickers for marking the heating circuits.

Equipment **flow**: Integrated fine regulating valves for manual presetting
Equipment **return**: Thermostatic valves for manual regulating (retrofitable for electrical actuators)

On request our manifolds are also available in stainless steel when project-specific. Please contact us.

Size	Pkg. unit	EAN-No. 4027848-
2-fold	1	228317
3-fold	1	180271
4-fold	1	180288
5-fold	1	180295
6-fold	1	180301
7-fold	1	180318
8-fold	1	180325
9-fold	1	228324
10-fold	1	228331
11-fold	1	228348
12-fold	1	228355

Manifold model 23070



Manifold made of brass

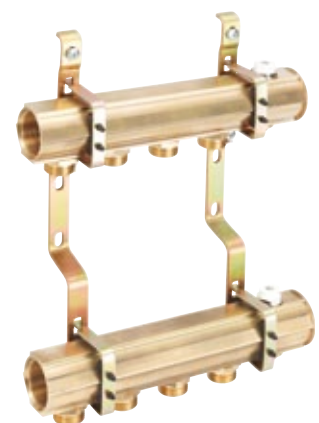
ready for connection and pressure proofed

1 1/4" profile pipe, Flows 3/4" Euro cone, valve distance 50 mm, with end plug, ventilation valve, 1/2" plug as well as soundproofed mounting elements and sticker for marking the heating circuits.

Equipment **flow**: Integrated fine regulating valves for manual presetting
 Equipment **return**: electrical actuators 230 V

Size	Pkg. unit	EAN-No. 4027848-
2-fold	1	228508
3-fold	1	228515
4-fold	1	228522
5-fold	1	228539
6-fold	1	228546
7-fold	1	228553
8-fold	1	228560
9-fold	1	228577
10-fold	1	228584
11-fold	1	228591
12-fold	1	228607

Manifold model 23020



Manifold made of brass for heating-connection

ready for connection and pressure proofed

1 1/4" profile pipe, flows 3/4" Euro cone, valve distance 50 mm, with end plug, ventilation valve, 1/2" plug as well as soundproofed mounting elements and stickers for marking the heating circuits.

Equipment **flow and return**: one-side bores

Manifold trunk model 2001	Size	Pkg. unit	EAN-No. 4027848-
	2-fold	1	145966
3-fold	1	145973	
4-fold	1	145980	
5-fold	1	145997	
6-fold	1	146000	
7-fold	1	146017	
8-fold	1	146024	
10-fold	1	146048	
12-fold	1	146062	



flows 3/8" female
made of profile pipe, inner width 30 mm, on both sides 1" female, on the one hand with end plug 1", hole distance 50 mm (other distances on request)

Manifold trunk model 2002	Size	Pkg. unit	EAN-No. 4027848-
	2-fold	1	146079
3-fold	1	146086	
4-fold	1	146093	
5-fold	1	146109	
6-fold	1	146116	
7-fold	1	146123	
8-fold	1	146130	
9-fold	1	146147	
10-fold	1	146154	
11-fold	1	146161	
12-fold	1	146178	



flows 1/2" female
made of profile pipe, inner width 30 mm, on both sides 1" female, on the one hand with end plug 1", hole distance 50 mm (other distances on request)

Mounting element	Model	inner width	for manifold trunk	Pkg. unit	EAN-Nr. 4027848-
	2033	30 mm	1"	1	325955
2130	39 mm	1 1/4"	1	325962	



for manifold trunks 1" and 1 1/4"
pipe clamp with soundproofed core, overall length 350 mm, packed in pairs

End plug model 2380	Thread	Pkg. unit	EAN-No. 4027848-
	1"	1	145003
1 1/4"	1	145010	



with o-ring

Fitting set model 2410	plastic pipe dimension(mm)	Pkg. unit	EAN-No. 4027848-
	13 x 2,5	10	145034
14 x 2	25	145041	
16 x 2	25	145058	
17 x 2	25	145089	
18 x 2	10	145119	
18 x 2,5	10	145126	
20 x 2	25	145133	



for plastic pipe, suitable for Euro cone 18 mm, consisting of:
push-in nozzle with o-ring, clamping ring and counting nut 3/4" female

Size	plastic pipe dimension(mm)	Pkg. unit	EAN-No. 4027848-
3/8"	12 x 2	10	144006
3/8"	13 x 2,5	10	144020
3/8"	14 x 2	10	144037
3/8"	16 x 2	10	144044
3/8"	16 x 3	10	144051

Connector model 2201



with plastic pipe connection, short pipe male thread, **R 3/8"** sealing surface and sealing

Size	plastic pipe dimension(mm)	Pkg. unit	EAN-No. 4027848-
1/2"	12 x 2	25	144068
1/2"	13 x 2,5	10	144075
1/2"	14 x 2	10	144082
1/2"	16 x 2	10	144099
1/2"	16 x 2,2	10	144105
1/2"	16 x 3	10	144112
1/2"	17 x 2	25	144129
1/2"	17 x 2,5	10	144136
1/2"	18 x 2	10	144143
1/2"	18 x 2,5	10	144150
1/2"	20 x 2	10	144167
1/2"	20 x 2,8	10	144174

Connector model 2202



with plastic pipe connection short pipe male thread, **R 1/2"** sealing surface and sealing

Model	Connecting thread	Pkg. unit	EAN-No. 4027848-
2735	3/8"	10	144945

Fine regulating valve-upper part



for flow , with **lead sealing cap**

Model	Connecting thread	Pkg. unit	EAN-No. 4027848-
2435	1/2"	10	181537

Fine regulating valve-upper part



for flow , with **turning handle**

Model	Connecting thread	Pkg. unit	EAN-No. 4027848-
2736	3/8"	10	144952
2436	1/2"	10	181568

Back pressure valve-upper part



for return, for manual operation by key/screw driver

Back pressure valve-upper part	Model	Thread	Pkg. unit	EAN-No. 4027848-
	2610	3/8"	10	273904
	2310	1/2"	10	274512



for electrical actuator
or thermostat connector
with hand adjusting cap, with o-ring

Hand adjusting cap also separately available

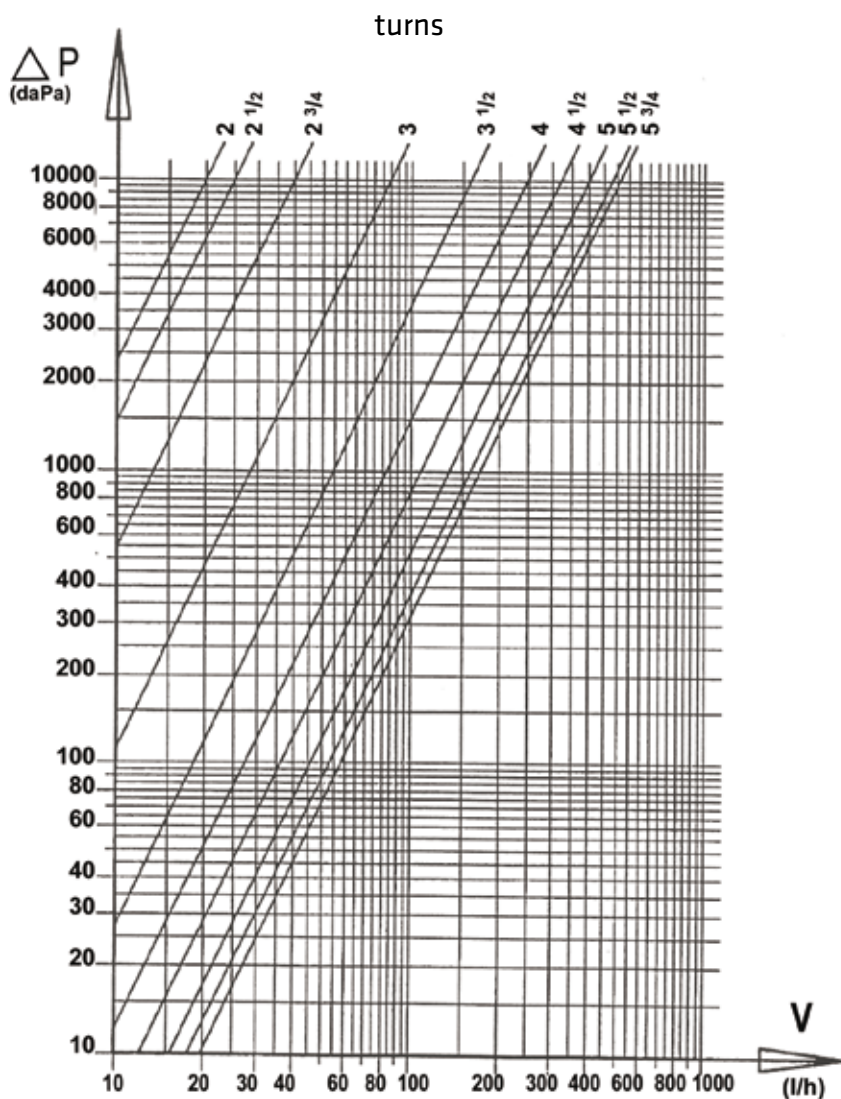
Electrical actuator 230 V	Model	with back pressure valve-upper part	Pkg. unit	EAN-No. 4027848-
	2617	3/8"	1	304820
	2317	1/2"	1	304790



with back pressure valve-upper part
for controlling by room thermostat,
electroless closed,
connecting thread **M 30 x 1,5**

More spare parts of our manifold programme on request.

Presetting diagram of (flow*) fine regulating valves for manifolds 1“:



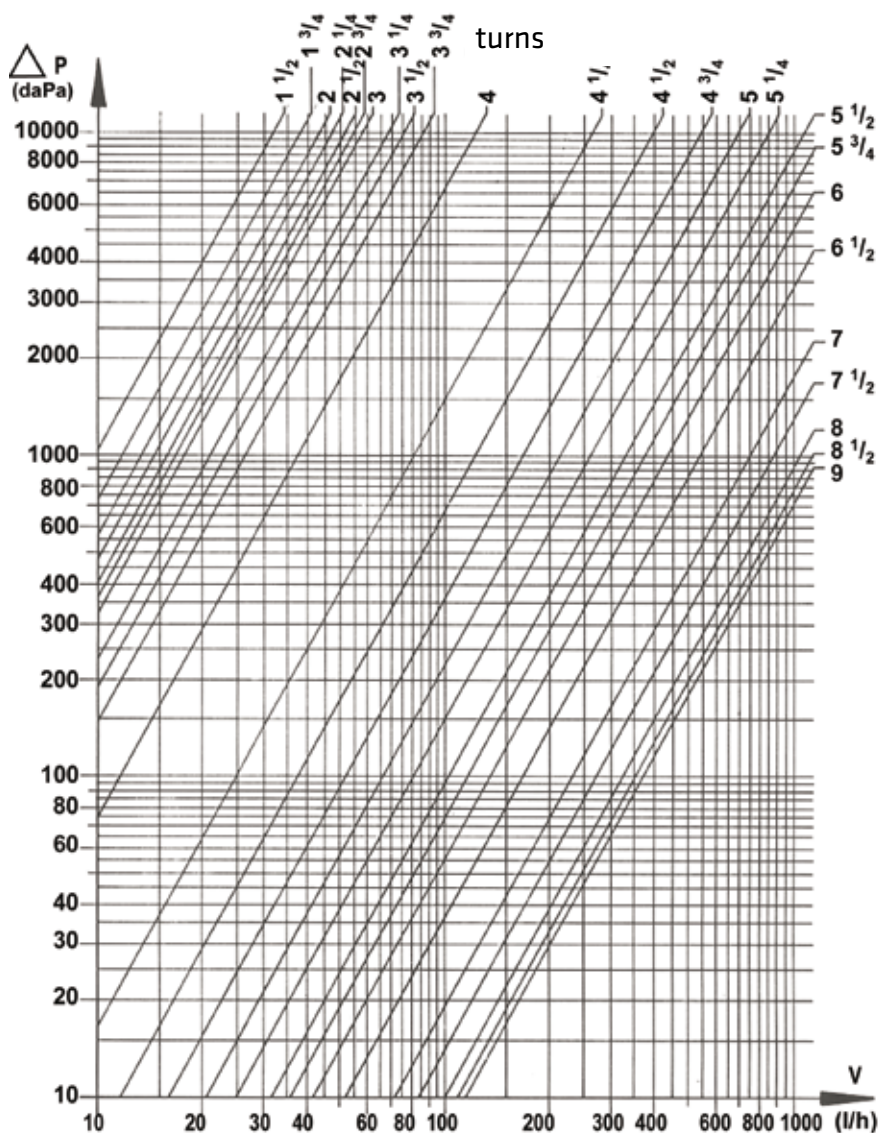
Presetting the (flow*) fine regulation valve:

Detach black cap of lead seal, close the valve completely by means of the ventilating key. Read the requested presetting value from the diagram. Open the valve by turning corresponding to the quantity of turns. Remove the ventilating key, plug in the cap of lead seal and plumb, if required.

Example:

To guarantee a flow of 150 l/h with a Δp -value of 2,000 daPa, the spindle has to be opened with 4 ½ turns by the ventilating key.

Presetting diagram of (flow*) fine regulation valves for manifolds 1 1/4":



Presetting the (flow*) fine regulation valves:

Close the valve completely. Remove the screw of the handwheel, but do not remove the handwheel.

Screw presetting spindle into the valve spindle until the limit stop by means of a suitable screw driver. The valve is then completely blocked. Read the requested presetting value from the diagram. Hold the handwheel and screw the presetting spindle to the left, as often as you see from the diagram. Rescrew fastening screw of handwheel.

Example:

If you wish to preset value 8 acc. to the diagram, you have to turn the presetting spindle 8 times to the left.



BEULCO®
Gebr. Beul GmbH & Co. KG

Kölner Str. 92
D-57439 Attendorn

P.o. Box 1 20
D-57425 Attendorn

Phone +49 2722 695-0
Fax +49 2722 695-5240

info@beulco.de
www.beulco.de