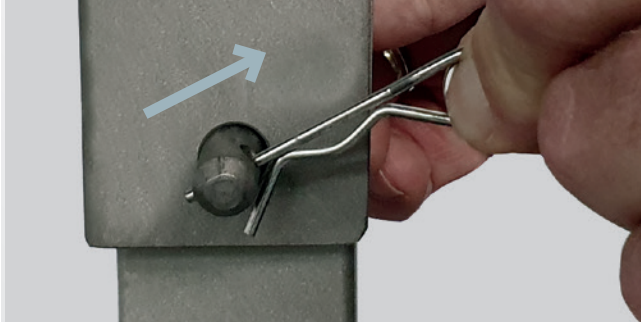


## INSTALLATION INSTRUCTIONS

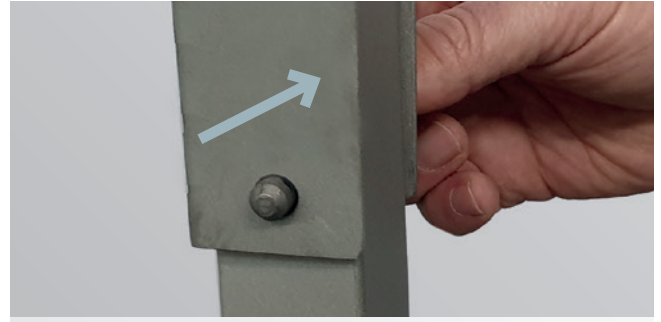
### Standpipe cart - height adjustment of the standard version

J



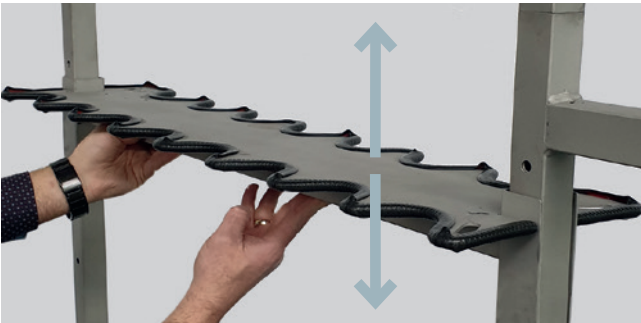
1

Remove the cotter pins from both sides of the head plate.



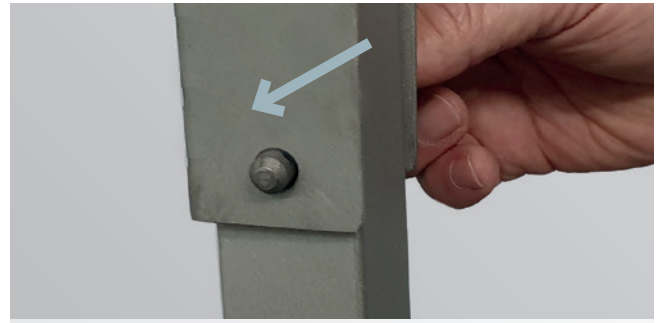
2

Hold the head plate and remove the pins on both sides.



3

Move the head plate to the desired height; the holes for the plug-in bolts must be on top of each other.



4

Push the pins from the head plate through the holes on both sides.

### Information

- Before use, make sure that the head plate and, if necessary, the extension are secured with pins and cotter pins.
- When loading the standpipe trolley, ensure that the load is secured (e.g. by tension belts).
- When parking the standpipe wagon, ensure that it is stable and check the brakes on the wheels.
- There is a risk of crushing due to the moving parts of the standpipe trolley.
- There is a risk of tipping over on sloping surfaces or if there is a transverse slope. Do not drive on slopes or cross slopes of more than 3%.

## INSTALLATION INSTRUCTIONS

### Standpipe cart - height adjustment of the standard version

J



5

Fix the pins on both sides with cotter pins.



6

Fix the standpipes with the tension straps.

### Information

- Before use, make sure that the head plate and, if necessary, the extension are secured with pins and cotter pins.
- When loading the standpipe trolley, ensure that the load is secured (e.g. by tension belts).
- When parking the standpipe wagon, ensure that it is stable and check the brakes on the wheels.
- There is a risk of crushing due to the moving parts of the standpipe trolley.
- There is a risk of tipping over on sloping surfaces or if there is a transverse slope. Do not drive on slopes or cross slopes of more than 3%.