

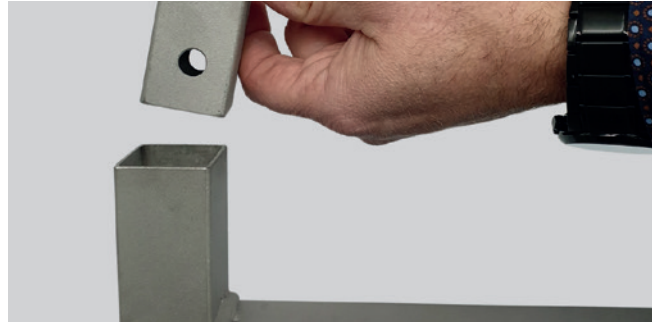
## INSTALLATION INSTRUCTIONS

### Standpipe cart - assembly of the extension

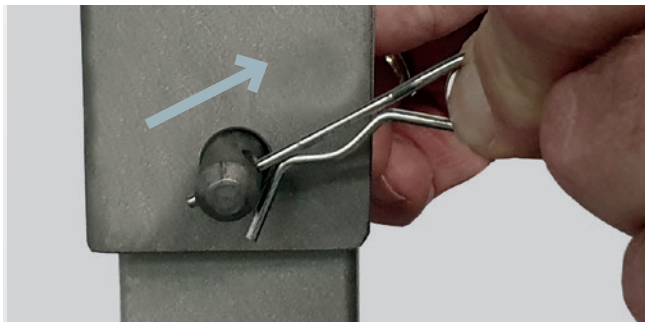
J



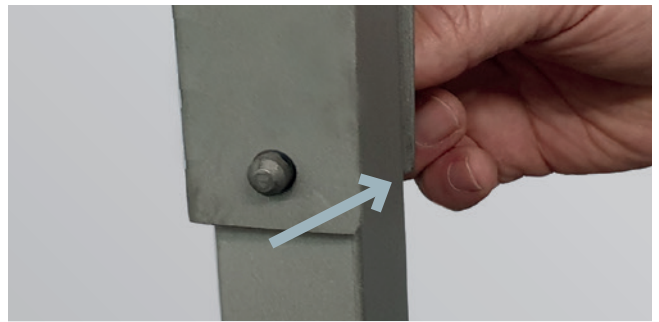
**1**  
Remove the two protective caps on the trolley. Remove the cotter pins and pins from the extensions.



**2**  
Insert the extensions into the bars of the trolley. Make sure that the securing holes are on the same side.



**3**  
Remove the cotter pins from both sides of the head plate.



**4**  
Hold the head plate and remove the pins on both sides.

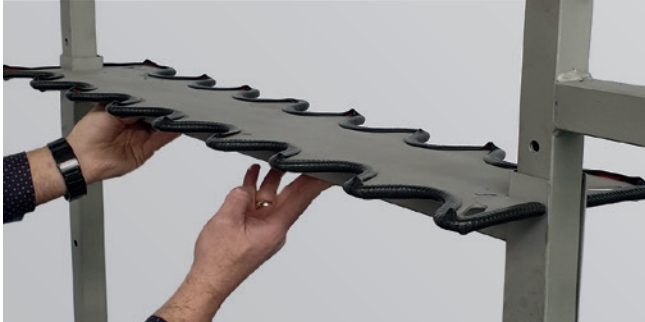
### Information

- Before use, make sure that the head plate and, if necessary, the extension are secured with pins and cotter pins.
- When loading the standpipe trolley, ensure that the load is secured (e.g. by tension belts).
- When parking the standpipe wagon, ensure that it is stable and check the brakes on the wheels.
- There is a risk of crushing due to the moving parts of the standpipe trolley.
- There is a risk of tipping over on sloping surfaces or if there is a transverse slope. Do not drive on slopes or cross slopes of more than 3%.

## INSTALLATION INSTRUCTIONS

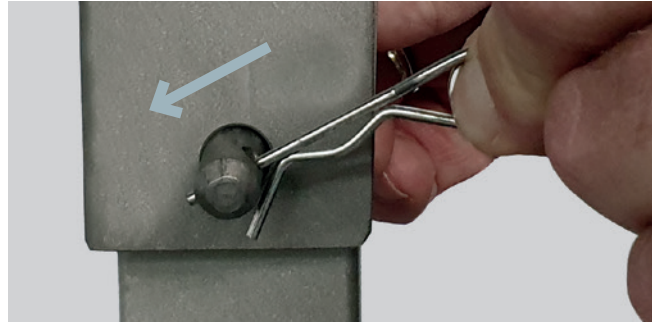
### Standpipe cart - assembly of the extension

J



5

Bring the head plate to the desired height within the extension so that the holes are on top of each other.



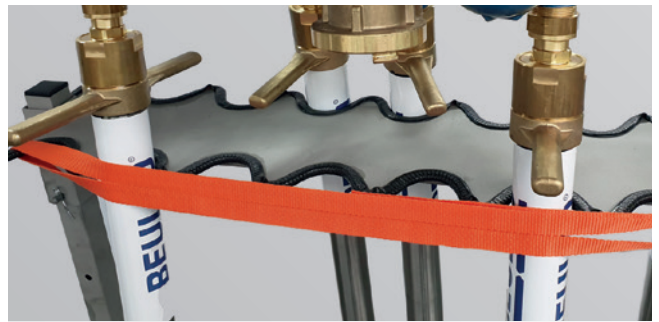
6

Insert the pins of the head plate on both sides and fix them with cotter pins.



7

Re-insert the plug-in bolts of the extension on both sides and fix them with cotter pins.



8

Fix the standpipes with the tension straps.

### Information

- Before use, make sure that the head plate and, if necessary, the extension are secured with pins and cotter pins.
- When loading the standpipe trolley, ensure that the load is secured (e.g. by tension belts).
- When parking the standpipe wagon, ensure that it is stable and check the brakes on the wheels.
- There is a risk of crushing due to the moving parts of the standpipe trolley.
- There is a risk of tipping over on sloping surfaces or if there is a transverse slope. Do not drive on slopes or cross slopes of more than 3%.